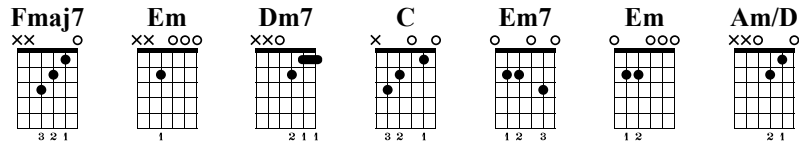


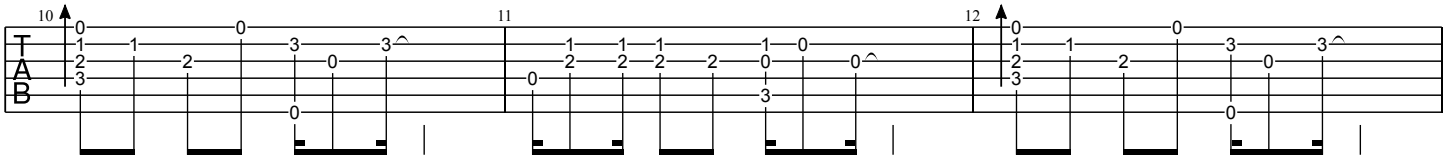
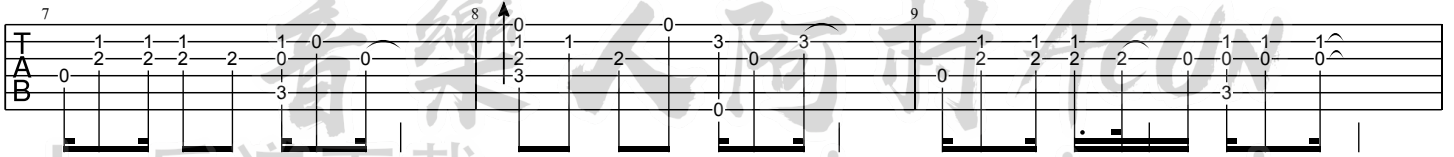
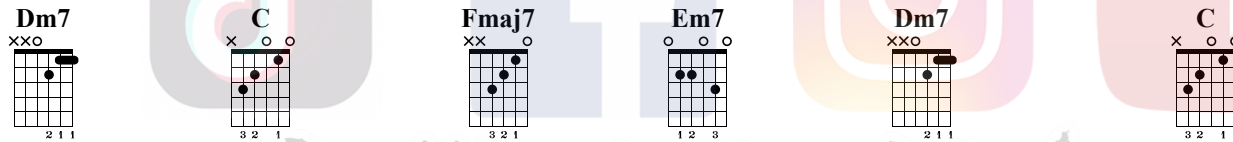
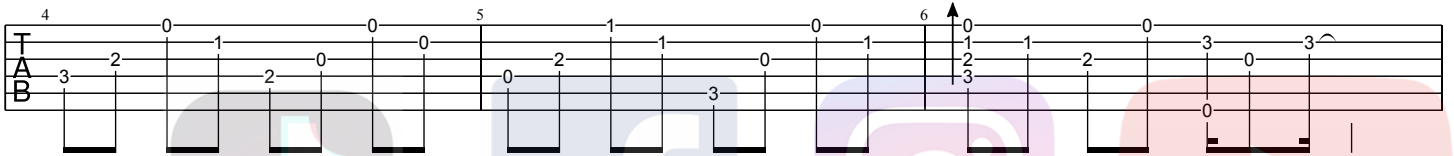
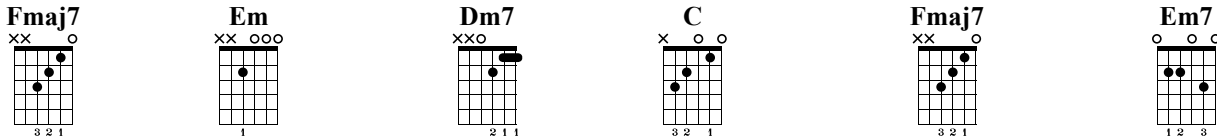
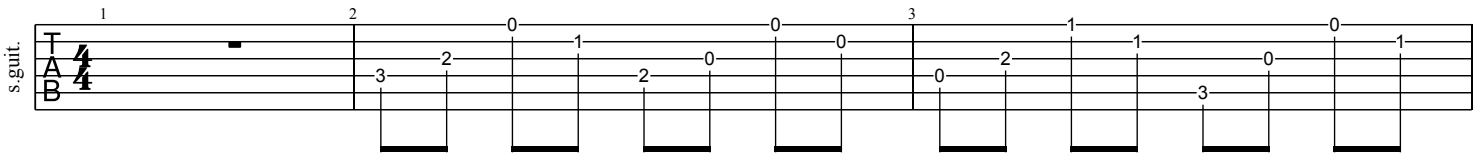
擁抱

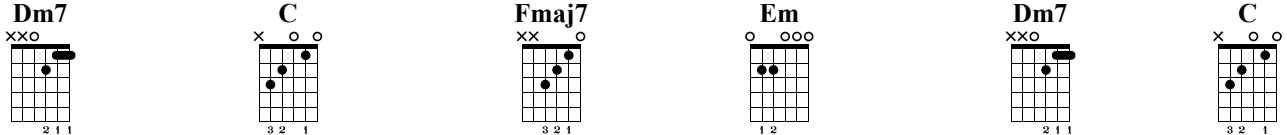
五月天



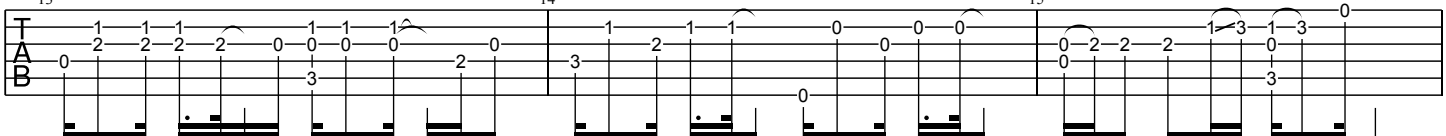
Standard tuning

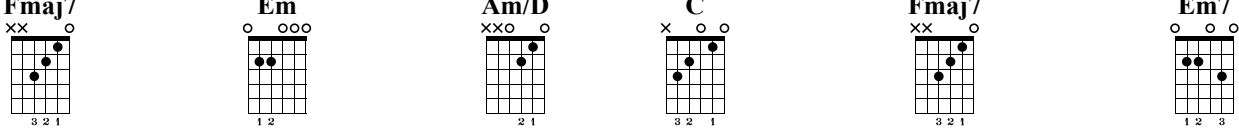
♩ = 60



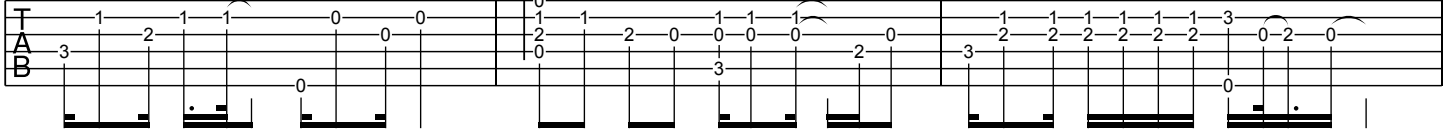
Dm7 **C** **Fmaj7** **Em** **Dm7** **C**


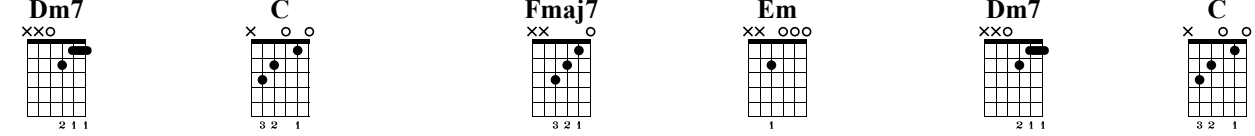
13 14 15




Fmaj7 **Em** **Am/D** **C** **Fmaj7** **Em7**


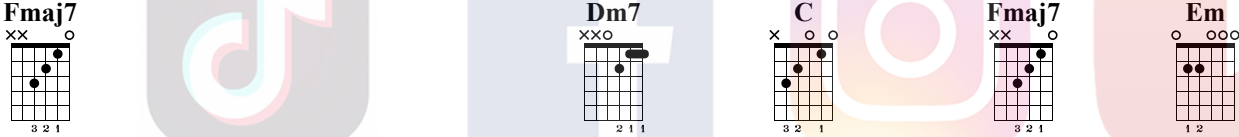
16 17 18



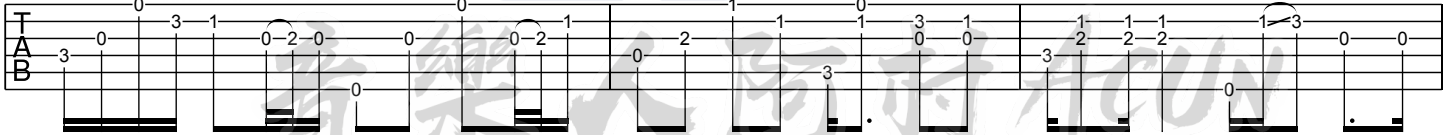
Dm7 **C** **Fmaj7** **Em** **Dm7** **C**


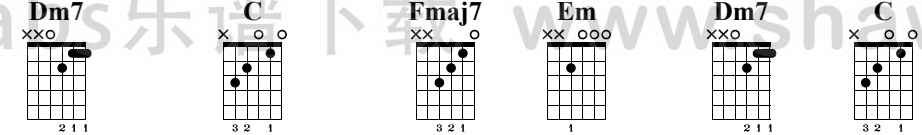
19 20 21



Fmaj7 **Dm7** **C** **Fmaj7** **Em**


22 23 24



Dm7 **C** **Fmaj7** **Em** **Dm7** **C**


25 26 27

